

Ultrastructural Study of Subpyloric Lymph Node of Jamieson and Dobson in Non Descript Goats in Cauvery Delta Districts under Scanning Electron Microscope

S. Sivagnanam*, S. Muthukrishnan, S. Paramasivan, J. Selvaraj and
B. Samuel Masilamoni Ronald

Veterinary College and Research Institute, Orathanadu, Tamilnadu, India

Article Received on 25.11.2016

Article Published on 05.01.2017

Abstract

A single long mesenteric lymph node that was identified as subpyloric lymph node of Jamieson and Dobson by gross observations in goat and was studied under the scanning electron microscope. The lymph node contained reticular cells which were stellate plates oriented in a uniform direction. Large round macrophages were loosely fixed by the reticular cell processes. The parenchyma of the lymph node was made up of reticular cells, macrophages, lymphocytes, plasma cells and their intermediate types. Macrophages had few long tentacle-like projections that terminated in club shaped cytoplasmic processes. Plasma cells and lymphocytes also remained in the sinuses.

The cortex of the node was built up by reticular cells, much smaller than those in the medulla and by densely packed round cells including a few macrophages. The trabeculae and the reticulum of the lymph node parenchyma formed a continuous structure. The continuity of sinus lining cells was confirmed in the present research.

Keywords: Subpyloric lymph node - Scanning Electron Microscopy - Goat

Introduction

The subpyloric lymph node of Jamieson and Dobson in goat was unpaired (single) which attracted the

attention to explore it ultrastructurally. Different climatic zones certainly have their influence in the immune status of animals to a variety of infections and infestation. This in turn decides the magnitude of normal physiological activity that any lymphatic organ should undergo. Therefore habitats of different geographical locations certainly show variation in ultrastructure of lymphoid organs during postnatal growth. Hence, the present study was designed to observe the scanning electron micrograph of the said lymph node in 2-3 year old goats in Cauvery delta districts. SEM revealed the surface anatomy, three dimensional morphology and the relations of the capsule, trabeculae, lymph nodules, reticular cells, macrophages, plasma cells, lymphocytes and other blood cells in the said lymph node. Present study would be of much use as normal reference in many clinical and pathological conditions.

Materials and Methods

The lymph node under present study was collected from 7 numbers of 2-3

* Corresponding Author Email ID:
anatshiva74@gmail.com

year old goats slaughtered in and around Thanjavur. The lymph nodes were washed in normal saline and a 5 millimeter long intact tissue piece was cut and fixed in 2.0 % solution of glutaraldehyde, followed by post fixation in osmium tetroxide and was dehydrated in critical point dryer machine. In order to obtain good surface texture for SEM, freeze cracking of the critical point dried tissue was done (Tanaka,1972). The tissue surface to be observed was sputtered with gold-palladium by evaporation coating. The tissues were observed in a VEGA3 TESCAN in SASTRA University, Thanjavur with an accelerating voltage of 3 kV.

Results and Discussion

The lymph node was made up of capsule, trabeculae, lymph nodules, medullary cords, lymph sinuses and blood vessels. For descriptive purpose Mori and Lennert (1969) coined the word “Pulp” which comprised lymph nodules, medullary cords, lymph sinuses and blood vessels.

Capsule and Trabeculae

The capsule revealed densely piled layers of collagen fibers. The inner surface of the capsule was attached to the spidery reticular cells by their feet traversing the marginal sinus. Trabeculae of variable thickness extended from the capsule into the sinuses. Cut end of each trabeculae resembled a stump of stiff wood under the SEM (Fig 1). Trabeculae had numerous branches. The trabecular ramification and the reticular cobweb of the sinus switched over to each other smoothly to form a continuous structure. The sinus lining

sheet directly covered the trabeculae. Light microscope and TEM studies of lymph node sections have demonstrated that the inner surface of the capsule and the surfaces of the trabeculae were coated by a basement membrane like substance and a layer of flattened cells (Sorenson, 1960). The reticular thread in the lymph node parenchyma were thus formed by a bundle of collagen fibrils with occasional elastic fibers covered by a sheath of reticular cell cytoplasm as also supported by some electron microscopists (Clark,1962). Based on his light microscopic observations Ishii (1966) concluded that the trabeculae consisted of abundant collagen fibers and a few elastic fibers, covered by a basement membrane and flattened cells.

Lymphatic sinuses

The lymphatic sinuses formed tunnel like spaces running beneath the capsule of the node and was also surrounding the cortical nodules and medullary cords. The sinuses were lined by a thin cell sheet and contained a very loose network of spidery reticular cells (Fig 2). In some portions the sinus appeared like a hollow vessel because of the presence of few reticular cells in that portion.

Sinus Lining Cells

The lymph sinus was separated from the pulp by a sheet of flattened Sinusoidal endothelial cells called Sinus lining cells. The sinus lining cells were revealed in this study as flat type of reticular cells that retained their processes into the lumen of the sinus and to the reticular cells in the pulp (Turner, 1969).

The present study confirmed the continuity of the sinus lining cells which was much discussed by Sorenson (1960) and Moe (1963). Their cytoplasmic processes were connected to the processes of sinus reticular cells. The surface of the lining cells was equally rough as that of the reticular cells at higher magnification.

Pulp

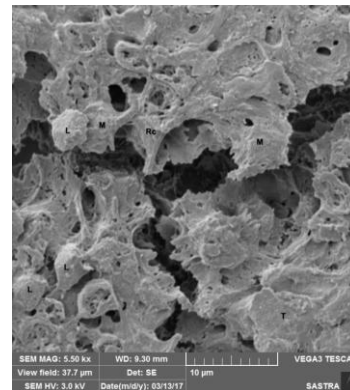
The sponge-like pulp tissue was comprised of lymph nodules and medullary cords. The framework of the pulp was formed by stellate reticular cells. The bodies of stellate reticular cells were smaller than those in the sinuses. The meshes were loosely filled with lymphocytes, plasma cells and macrophages. Secondary nodule was a dense, granular area that showed numerous, small round cells and appeared in the cortical portions of the pulp. Some smaller cells and large macrophages were found entangled in the meshes formed by the reticular cells.

Macrophage

The macrophages measured 10 -15 μ in diameter and appeared rough in surface as they were densely covered by clubbed cytoplasmic processes. Some of them had tentacle like projections with either clubbed or tapered endings. The macrophages were found to be tightly embraced by the reticular cell processes which appeared like broom stick ramifications. The macrophages in the lymph node, though they usually are round or ovoid, may extend pseudopodial processes during ameboid movement (Mori and Lennert, 1969).

The medullary sinuses contain free macrophages (Maximow and Bloom, 1935). The macrophages as seen under the SEM appear differently from the reticular cells in their shape and their relation to their neighbours (Fig 3) and there are no transitional forms between either. The rounded shape of the macrophages in our specimens may have made it easier to discriminate the two types of cells. Round macrophages appeared numerous and constantly in the sinus than in the pulp. The TEM study of the rat lymph node indicated that the sinus macrophages had irregular surface with many small finger-like micropseudopods (Nopajaroonsri et al., 1971). This description was partly in accordance with our SEM observations.

Figure 1



L – LYMPHOCYTE

M – MACROPHAGE

Rc – RETICULAR CELL

T - TRABECULAE

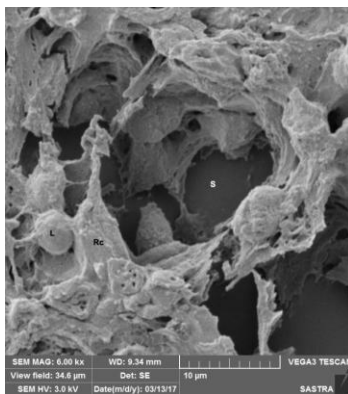
Reticular Cells

The reticular cells are polygonal or stellate in form with their thread-like processes. In most places the cell bodies were flat plates. The neighboring cell plates were arranged in uniform direction. The perikaryon of the reticular cell was

thick. The cell surface appeared smooth when observed under lower magnification but was rough at higher magnification showing irregular elevations and tiny pits.

Present SEM observations indicated that the reticular cells, even though phagocytosed small particles such as the carbon particles of Indian ink (Drinker *et.al.*, 1933) were specialized for the formation of the skeleton of the lymph node. Menkin (1946) postulated that the reticular cells of the lymph sinus were equivalent to the lymphatic valves.

Figure 2

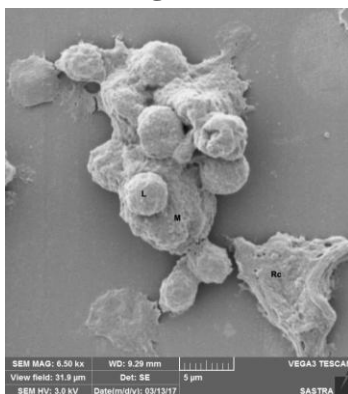


L – LYMPHOCYTE

S – SINUSOID

Rc – RETICULAR CELL

Figure 3



L – LYMPHOCYTE

M – MACROPHAGE

Rc – RETICULAR CELL

References

- Clark, S.L., 1962. The reticulum of lymph nodes in mice studied with the electron microscope, *Amer. J. Anat.*, 110: 217-258.
- Drinker, C. K., G. B. Wislocki and M.E. Field, 1933. The structure of the sinuses in the lymph nodes, *Anat. Rec.*, 56: 261-265.
- Ishii, T., 1966. The ultrastructure of the mesenteric lymph node of the rat, *Amer. J. Anat.*, 109: 183-225.
- Maximow, A.A. and W. Bloom, 1957. A text-book of histology, 7th edn., W.B. Saunders Company, Philadelphia, pp 814-819.
- Menkin, V., 1946. The significance of lymphatic blockade in immunity, *Annals of the New York academy of sciences*, 46: 789-806.
- Moe, R.E., 1963. Electron microscopic appearance of the parenchyma of lymph nodes, *Amer. J. Anat.*, 114: 341-369.
- Mori, Y. and K. Lennert, 1969. Electron microscopic atlas of lymph node cytology and pathology, 4th edn., Springer Verlag, Heidelberg, pp 113-117.
- Nopajaroonsri, C., S.C. Luk and G.T. Simon, 1971. Ultrastructure of the normal lymph node, *Amer. J. Path.*, 65: 1-24.

Sorenson, G.D., 1960. An electron microscopic study of popliteal lymph nodes from rabbits. *Amer.J. Anat.*, 107: 73-96.

Tanaka, K., 1972. A simple type of apparatus for critical point drying

method, *J. Electronmicroscopy*, 21: 55-56.

Turner, D.R., 1969. The vascular tree of the heamal node in the rat. *J. Anat.*, 104: 481-493.